



# HOLBROOK PALMER PARK ACCESS AND CIRCULATION IMPROVEMENTS PROJECT

---

CITY COUNCIL STUDY SESSION

DECEMBER 7, 2022

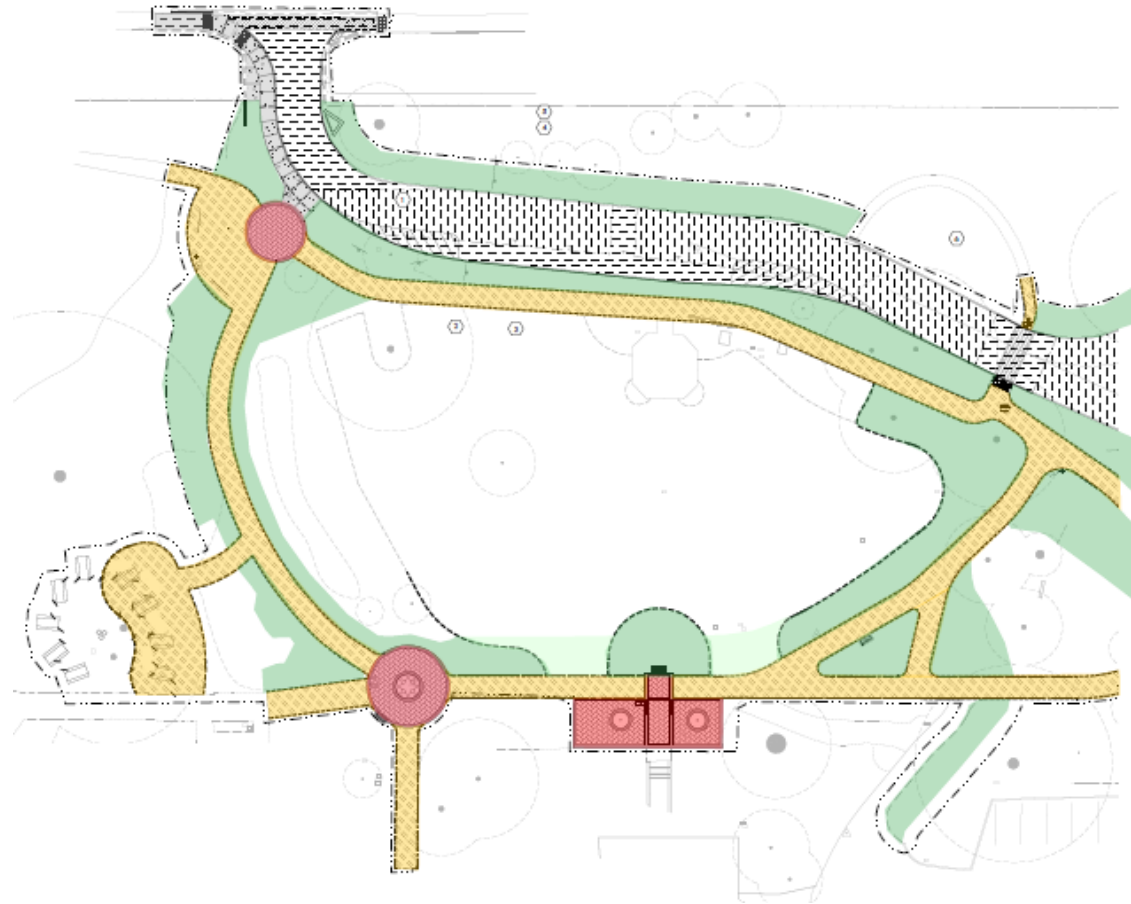
# Holbrook Palmer Park Access and Circulation Review and Feedback

---

- Project Layout and Elements
- Project Funding Signage
  - Style
  - Sizing
  - Location
- Bid Alternates

# Layout – Hardscape and Planting 1

---

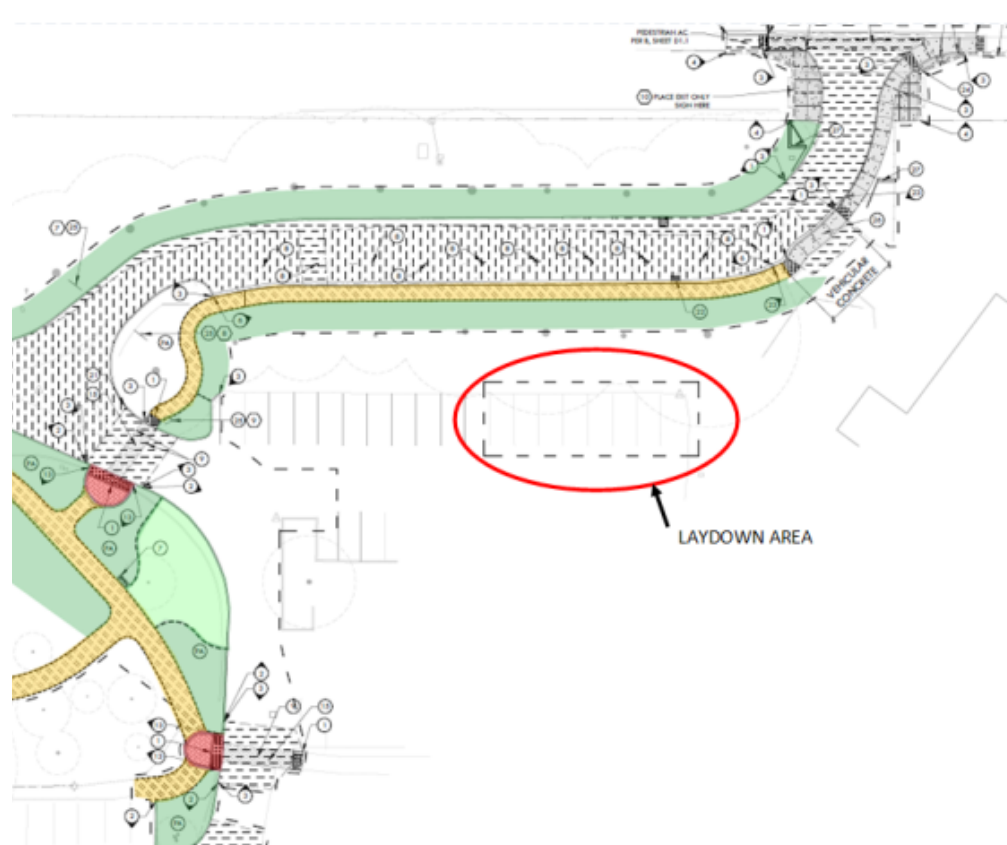


# Layout – Hardscape and Planting 2



# Contractor Laydown Area

---



# Entrance and Exit Areas

---



# Decorative Fencing

---





# Project Funding Signage

---

Grants require signage recognizing our funding partnerships:

- California Parks and Recreation Department
- Santa Clara County (Stanford Mitigation Fund)

Signage is required during and post construction



# Project Funding Signage Requirements

---

## California Parks and Recreation Department:

### **Bond Act Sign**

A sign acknowledging the California Drought, Water, Parks, Climate, Coastal Protection, and Outdoor Access for All Act of 2018 as the funding source for the project must be installed during construction and at completion (PRC §80001(b)(3)). If appropriate, the same sign can be used during construction and completion.

### **Sign requirements**

The sign must be available during construction, at the final inspection of the PROJECT, and remain in place for a minimum of four (4) years from date of PROJECT completion. There is no minimum or maximum size other than the minimum size for the logo, as long as the sign contains the required wording.

### **Sign Language**

All signs must contain the following language:

GAVIN NEWSOM, GOVERNOR

Wade Crowfoot, Secretary for Natural Resources

Armando Quintero, Director, California Department of Parks and Recreation

Use the names of the current officials. The name of the director of the local agency or other governing body may be added. The sign may also include names (and/or logos) of other partners, organizations, individuals and elected representatives.

### **Logo**

All signs must display the Parks and Water Bond Act logo (shown on the cover of this guide). Display the logo to maximize visibility and durability. [Download the logo](https://resources.ca.gov/grants/Grant-Program-Resources) at <https://resources.ca.gov/grants/Grant-Program-Resources>, click on the logo artwork section. Each edge of the logo must be a minimum of 24" x 24". Exceptions may be approved, when appropriate, at OGALS' discretion.

### **Sign Construction**

All materials used shall be durable and resistant to the elements and graffiti.

### **Sign Cost**

The cost of the sign(s) is an eligible PROJECT cost. Permanent signage is encouraged.

### **Appropriateness of Signs**

For projects where the required sign may be out of place or affected by local sign ordinances, OGALS may authorize a sign that is more appropriate to the project.

### **State Approval**

GRANTEE shall submit the proposed number, locations, size, and language of signs for preliminary review. Final payments will not be processed until post completion signage has been approved and installed.

# Project Funding Signage Requirements

---

## Santa Clara County (Stanford Mitigation Fund)

- c. Publicly acknowledge the Grant by providing a plaque permanently affixed to the Project, or on a prominent location on the Project site, visible to the public. The acknowledgement credit shall read: **“Project made possible in part by funding from the County of Santa Clara.”** Project Applicant will obtain County review and approval of the plaque/sign prior to manufacture and installation.

# Signage Sample 1

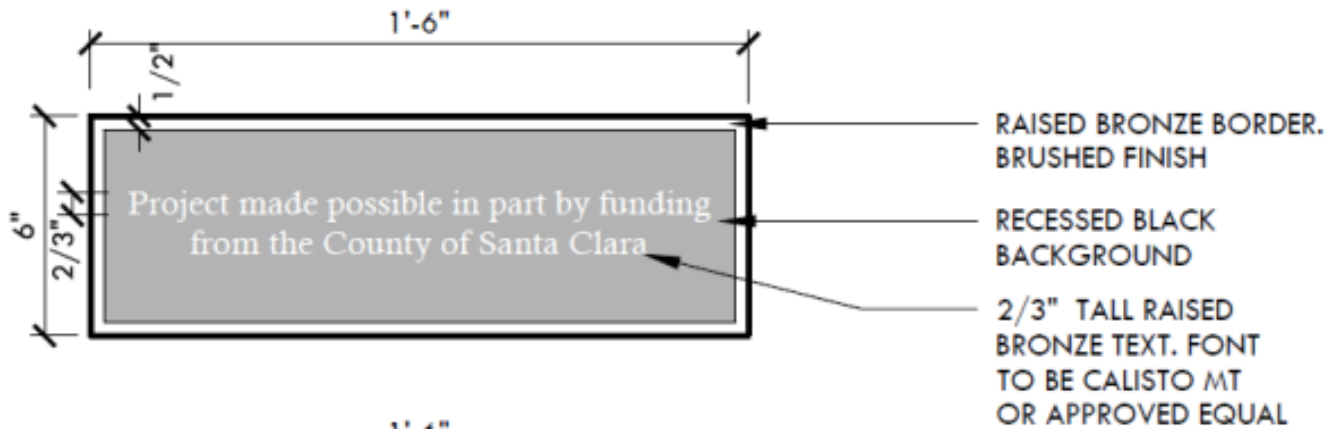
---

California Parks and Recreation Department:



# Signage Sample 2

Santa Clara County (Stanford Mitigation Fund):



# Preliminary Cost Estimates

---

- Complete Project: +/- \$1,330,000
- Alternates:
  - Defer installation of site furnishings
  - Defer specific areas of irrigation and/or planting
  - Defer installation of ornamental fencing at the entrance and exit driveways
  - Other